

LIGHTING



CAP2700

NEW GENERATION HEADLIGHT TESTER

The CAP2700 headlight tester is a concentrate of technology and performance. Its **wide lens** allows control of the latest generation of headlights. Its unique **Smart Control system** provides ergonomics and productivity.

INNOVATION

ERGONOMICS

PRODUCTIVITY

- New user experience
- Extra large lens
- S2700 Software
- Fast maintenance





INNOVATION AND ERGONOMICS

EXTRA-LARGE LENS

Lens compatible with all technologies

► Halogen, Xenon, Bi-Xenon, LED, Bi-LED, Laser

Beyond standard optics, the CAP2700's unique lens format enables the testing of all designs and technologies: extra-wide headlights, adaptive headlights, and smart headlights.

Lens format x 2.5

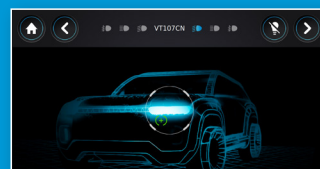
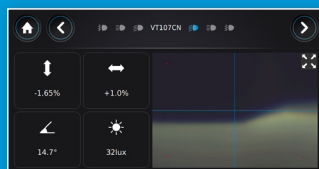
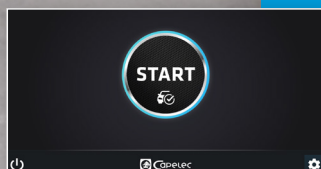
Despite its size, this new generation of lenses offers a short focal length and a compact housing.



NEW S2700 INTERFACE

An enhanced interface for greater comfort and productivity

- Intelligent centering system
- Fully digital measurement compensated in real time by the inclinometer
- Remote display and data entry solution on PC





NEW USER EXPERIENCE

Optimized procedure flow

The exclusive SmartControl system controls and validates operations via the validation button integrated into the CAP2700 handle.

Quick measurement and movement with one hand

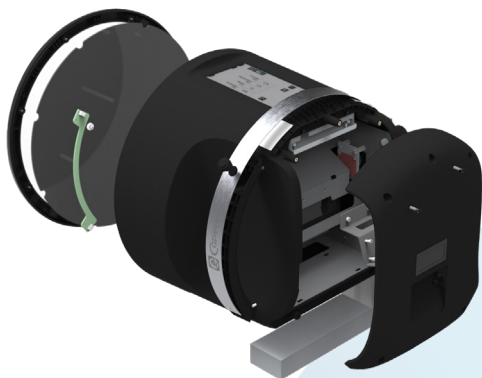
The operator holds the equipment with one hand, moves it, and carries out the procedure in a matter of seconds with great ease.



FAST MAINTENANCE

The design of the case simplifies:

- access to electronic modules
- calibration and assembly
- remote handling





- ✓ High-resolution color camera
- ✓ Electronic card
- ✓ Modes: Technical Inspection, Repair, AFS Calibration
- ✓ For light vehicles, heavy goods vehicles, and two-wheelers
- ✓ Compatible with left-hand and right-hand drive

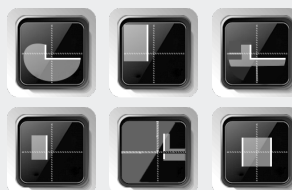
ADAS CALIBRATION



Measurement module that can be installed on an ADAS gantry for calibration (vehicle thrust axis) coupled with software (ADAS and diagnostics).

ADAPTABLE FRONTLIGHT SYSTEM (AFS)

- Calibration of MATRIX LED lights
- Pattern library



SPECIFICATIONS

CAP2700

Settings	Low beam, high beam, fog lights
Extended connectivity	WIFI a/b/g/n/ac RJ45
Cut-off	-6 / +6% (+/- 0,2%)
Side deviation	-10 / +10%
Yaw angle	-90 / +90%
Roll angle	-90 / +90%
Light intensity	0/ 200 lx 0/125 kcd
Weight	25kg
L x W x H	640 x 720 x 1890
Autonomy	Long-life lithium battery
Charging time	4 hours Use during charging

OPTION

LV or HGV rails
Wheels for rails
Eccentric for wheels
Wheel brake

