



MOBILE TEST LANE  
LV & HGV

**CAP CHRONO**  
INSPECTION EVERYWHERE



# MOBILE INSPECTION LANE FOR LIGHT AND HEAVY VEHICLES



Test area integrated into the container. Up to 13 tons load.

## CAP CHRONO 10510 THE LATEST-GENERATION MOBILE SOLUTION

The CAP10510 mobile test line is designed for outdoor inspections and in difficult-to-access areas. It guarantees fleet safety and availability.

PRACTICAL

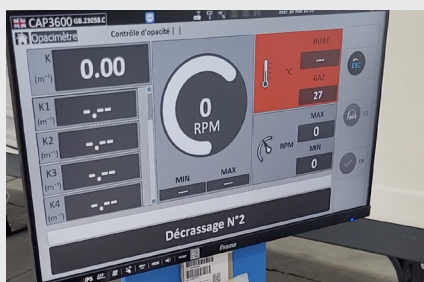
AUTONOMOUS

SELF-SUFFICIENT

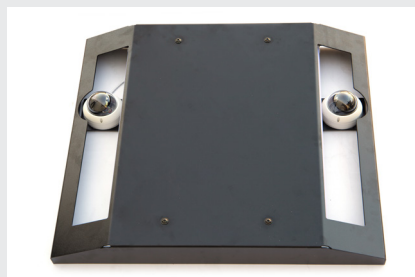
CONNECTED

- Automatic opening and closing
- Integrated power generator
- Fully equipped to perform inspections
- Centralized data

## ERGONOMIC AND FAST



Remote control and large touch screen



Remote play detectors inspection by cameras

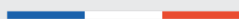


Full automatic operations



### Reliability and expertise

Capelec equipment uses proven measurement technologies. They guarantee fast and accurate results.







## FAST COMMISSIONING

**Automatic and quick to deploy**, it features a remote-controlled hydraulic lowering device.

## FULL TEST LANE

Allows inspection of braking, suspension, side slip functions, as well as lighting and emissions testing.

## PRODUCTIVITY

**The test area is integrated into the truck**, with all operations carried out inside.

## STAND-ALONE

**Autonomy of 3 days | 8h per day**, allowing access to remote locations.

## FULL-EQUIPPED



### Office

- 5 m<sup>2</sup> area

---

- Workstation

---

- PC and printer

---

- PTI/MOT software (option)

---

- Air conditioning A/C



### Inspection area

- ✓ Gas analyzer

---

- ✓ Smokemeter

---

- ✓ Headlight tester

---

- ✓ Braking, suspension and sliding bench

---

- ✓ Hydraulic play detectors

---

- ✓ Remote control



### Technical area

- Power generator

---

- Hydraulic power pack

---

- Electrical cabinet

# SPECIFICATIONS

## INTERFACE

Interface	Touchscreen PC OS Win   Software S3600 IR remote control
Communication	Wireless

## TESTING PLATFORM

ISO container	40 pieds
Weight	6000 kg   rollout 10'
Semi-trailer	12 m (king pin)
Axles	x3
Hydraulic supports	x4
Engine	25 kVA
Dimensions in closed position	4 x 2.5 x 2.4 m
Dimensions in extended position	4 x 8 x 4.5 m

## HEADLIGHT TESTER

Weight	25kg
Dimensions	590 x 670 x 1 850 mm
Battery	Long 10-hour autonomy
Communication ports	USB, RJ45, RS232, WIFI
Cut-off	-6/+6 %
Side deviation	-10/+10 %
Yall angle	-90/+90°
Roll angle	-90/+90°
Light intensity	Lux 0/200 lx   Candela 0/12500 cd
Accuracy	Lux 10%

## 4-GAS ANALYZER

Measurements	HC, CO, CO <sub>2</sub> , O <sub>2</sub>
Preheating	< 9 minutes at 0°C
Operating temperature	-10°C to 55 °C
Response time	< 5 seconds for Co, Co <sub>2</sub> , HC

## SMOKEMETER

Opacity range	0,00 to 9,99m <sup>-1</sup>
Probe length	1,50 m
Communication	Wireless

## BRAKE TESTER

Dimensions	1000 x 1560 x 325 (x2)
Frame	steel
Max. load	13 t per axle
Motors	7.5 Kw (ABM germany)
Test speed	2.5-3 km/h
Measurement range	0-30 kN
Path	80-220 cm
Rollers	High grip
Pedometer	wireless (bluetooth)
Power supply	230/400V, 50Hz

## SUSPENSION TESTER

Dimensions	870 x 850 x 330 (x2)
Frame	steel
Max. load	3 t per axle
Motors	3 Kw
Frequency	25Hz
Path	80-220 cm
Power supply	230/400V, 50Hz

## PLAY DETECTORS

Remote video control	HD Cameras   LED lighting
Plate dimensions	800 x 690 mm
Frame dimensions	212 x 550 x 600 mm
Maximum load per wheel	10 tons (passage)
Maximum pressure	150 bar
Force per plate	30 KN
Remote control	Cordless with LED lamp
Motor	4 kW, 3 phases +N +Earth 400v/50hz
Coating	Hot-dip galvanized steel

## SIDE SLIP TESTER

Dimensions	45 x 52 x 7 cm
Frame	galvanized steel
Measuring range	20/-20m/Km
Load	4 t max. per axle