

## CAP2600 WORKSHOP

Expert electronic headlamp system



Made in  
**France**

The CAP2600 WORKSHOP electronic headlamp tester with Camera is an expert lighting control system:

- Detailed before and after report
- Multi-zone use
- 3 modes: expert, adjustment and technical pre-check

Everywhere in the workshop and in a few minutes, the CAP2600 WORKSHOP allows:

- To establish an expert review of headlamps
- To improve driver safety
- To guarantee the conformity of the headlights
- To professionalize the lighting activity
- To build a results base

- Color touch screen
- Linux OS and S2600 software
- Multilingual
- Alignment laser
- Positioning assistance
- ANYWHERE module
- Connectivity: wired, wifi
- Types of headlamps: fog, low and high beam
- Measurements and values: cut-off, lateral, light intensity, glare,
- Level compensation
- Left and right-hand drive



## INNOVATIVE FEATURES

- Lighting diagnosis: safety and compliance
- Edition of pre- and post-diagnosis reports
- Multi-zone implementation thanks to the ANYWHERE function
- Compatibility with Matrix technology
- Easy commissioning

## THREE MODES OF OPERATION

- Expert: verification of geometry and light intensity, followed by a complete analysis (safety, conformity, recommendations)
- Adjustment: display of values and adjustment assistance
- Pre-check: verification of lighting conformity

## TEST REPORT BEFORE AND AFTER

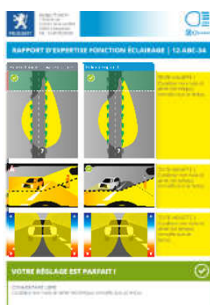
In a few minutes, the diagnosis of the dipped beam headlamps is carried out and restored in a detailed report. It presents the driver with an advanced state of the function: is it optimal? Dangerous for the driver or other vehicles? The A4 format edition can be saved, used or distributed.

## MULTI-ZONE OPERATION

Thanks to the ANYWHERE module, the measurement can be carried out in many areas of the workshop. For greater accuracy, the compensation device for ground irregularities is combined with the inclination of the headlight control unit. Upon delivery, it facilitates a quick commissioning, without service provider.

## AFS MODE

The Advanced Frontlighting System (AFS) advanced function allows the adjustment, calibration and parameter setting of MATRIX LED (VAG) headlights. It must be associated with a manufacturer's diagnostic tool and follow the procedure.



## SPECIFICATIONS

Weight : 25kg  
L x l x H : 590 x 670 x 1 850 mm  
Quick recharge in 3h30 with automatic stop  
Thermal printer  
Column : 1,80m  
Ports : RS, USB, RJ45, wifi  
Base : wheel

## MEASUREMENT

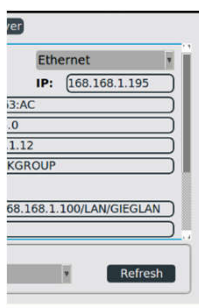
Cut-off measurement : -6/+6 %  
Latéral : -10/+10 %  
Yall angle : -90/+90°  
Roll angle : -90/+90°  
Light intensity measurement : Lux 0/200 lx or  
Candela 0/12 500 cd  
Accuracy : Lux 5%

## OPERATION CONDITION

Battery : Lithium  
Autonomy : 10h  
Charger ower supply: 9V 2A  
Ambient temperature: from 5 to 40°C  
Storage temperature : -15 à +55°C  
Relative humidity : < 98%  
Vehicle range : automotive, HGV, motorcycle



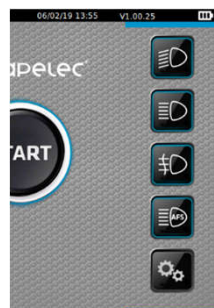
Touchscreen  
Ports : USB, RS232, RJ45



Wireless connexion



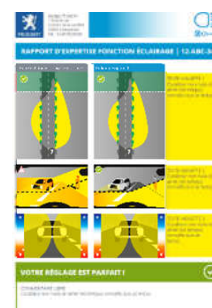
Anywhere module



S2600WH software



Socle roues  
Poignée et housse



Expert report